

## Circularly-polarized Panel Antenna for 868 MHz

Circularly-polarized panel antenna for Wireless M-Bus applications.  
The antenna is supplied with down-tilt mast mounting kit.

**B.E.S.D. Benelux B.V.**

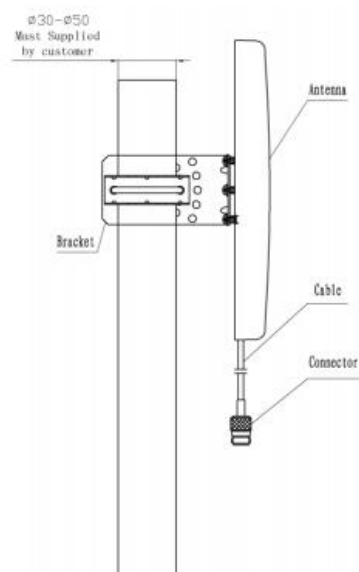
Industrieterrein "De Leemskullen"  
Wilhelminahof 7 – 8, 5751 GJ Deurne  
Postbus 203, 5750 AE Deurne  
The Netherlands

T. +31 (0)493 316 554

E. [info@besd.nl](mailto:info@besd.nl)

i. [www.besd.nl](http://www.besd.nl)

Type	BMPA-868
Order Nr.	2313-2313-18755
Operating Frequency	865 to 869 MHz
Bandwidth	4MHz
Antenna Gain	9 dBi
VSWR	< 1.4
F/B Ration	> 21 dB
Polarization	Right Hand Circular Polarization (RHCP)
Vertical Beam Width	70°
Horizontal Beam Width	65°
Impedance	50 Ohm
Max. Power	100 Watt
Connector	N female
Cable	1 meter
Dimensions	260 x 260 x 35 mm
Weight	0,75 kg

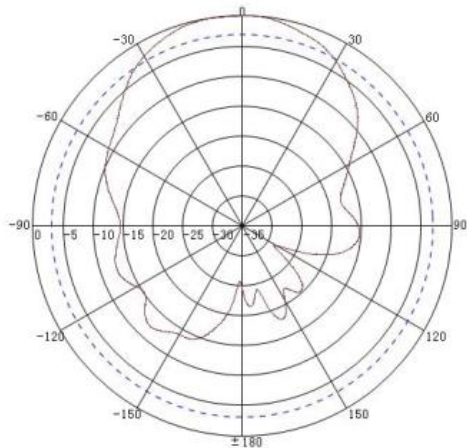


# Circularly-polarized Panel Antenna for 868 MHz

B.E.S.D. Benelux B.V.  
 Industrieterrein "De Leemskullen"  
 Wilhelminahof 7 – 8, 5751 GJ Deurne  
 Postbus 203, 5750 AE Deurne  
 The Netherlands

T. +31 (0)493 316 554  
 E. info@besd.nl  
 i. www.besd.nl

Pattern E:



Pattern H:

