

IoT FIBRE OPTIC CONNECTIVITY

Simple and secure connection of
WIFI ACCESS POINTS, OUTDOOR CAMERAS
and **SMART CITY SENSORS**



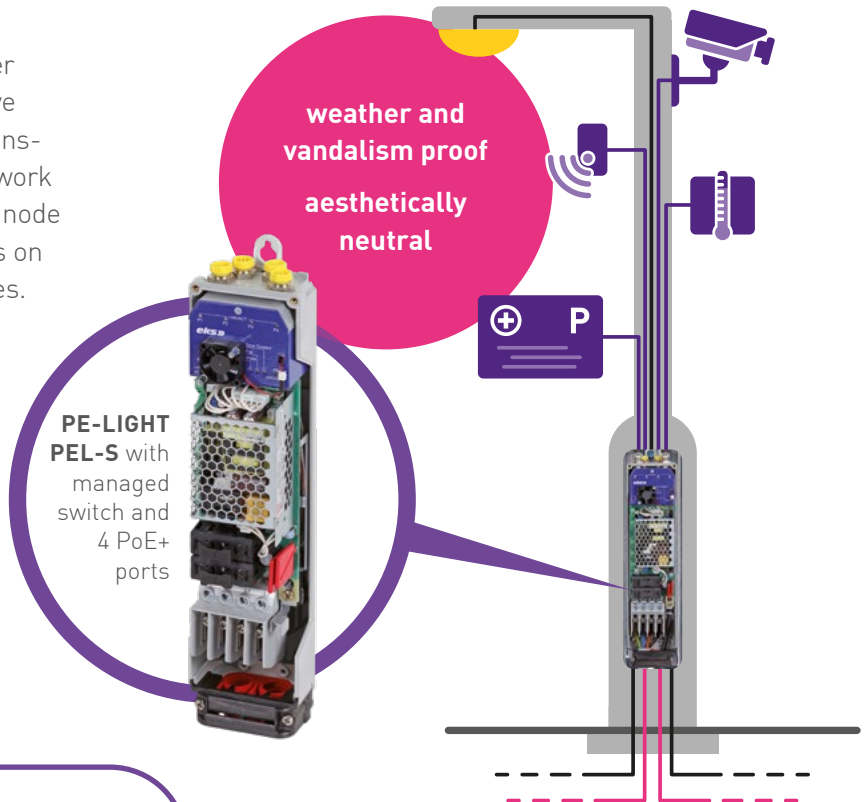
pe-light
pole junction box

eks
fiber optic systems



The ultra-compact junction box **PE-LIGHT** integrates power connection and passive or active unmanaged/managed data transmission into the fiber optic network in the light pole; it is the smart node for the future Internet of Things on corporate sites or in smart cities.

- PoE connections for network components
- Managed PoE switch
- Splice tray
- Power supply unit for switch
- Fuses
- Terminal clamps



EXPLANATIONS & WORTH KNOWING

Splicing

Fusion of the glass fiber ends with the help of a splicer.

PoE - Power over Ethernet

In addition to data transmission, the Ethernet cable is used for power supply.

Media converter

Transmits data from the medium copper cable into the medium glass fiber.

Switch

Active network device that transmits data between several devices.

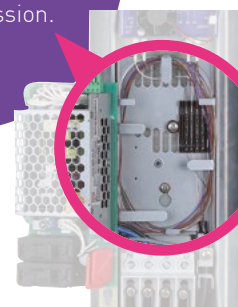
Managed Switch

Active network device with router and/or gateway properties for use case-optimized transmission of data between multiple end devices. A user interface is available on the managed switch for configuring the data traffic, updating and saving, securing the system and signaling alarms.

Ring redundancy

Ring structure in data communication ensuring higher reliability than a linear connection of the devices.

The internal **SPLICE BOX** ensures that the spliced fibers are neatly stored without kinks enabling flawless data transmission.



MODULAR SYSTEM

POLE JUNCTION BOX PEL-M

passive



active
Fast Ethernet



active
Fast Ethernet
PoE



active
Gigabit Ethernet



active
Gigabit Ethernet
PoE



POLE JUNCTION BOX PEL-S

managed
Ethernet Switch



Fast Ethernet



Gigabit Ethernet



Ring redundancy



Managed systems



FX - Fiber optics connection



M12 connectors



Power over Ethernet
15 watt



Power over Ethernet (+)
30 watt



Power over Ethernet (++)
60 watt



Wide temperature range

High Availability and Reliability

Good accessibility, neat cable arrangements and weather protection for mechanical warranty, ring redundancy for system resilience, in-mast battery and image storage for power failures (on request).



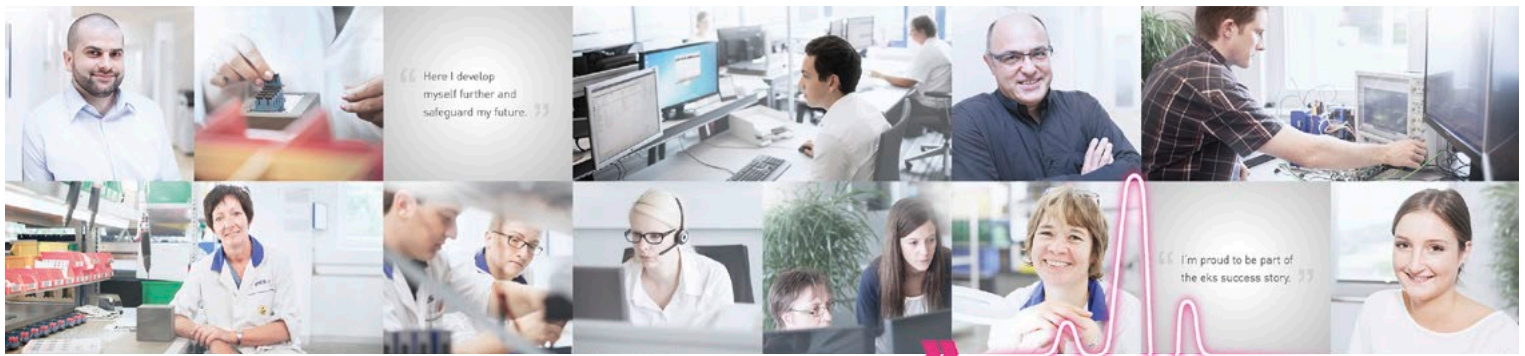
www.eks-engel.de/PE-LIGHT-EN



SMART CITY



PE-LIGHT is the future-proof gateway for the connection of IoT solutions such as smart parking, smart waste, smart traffic or similar with the fiber optic network, in future also in connection with 5G for real-time broadband transmission.



INTELLIGENT SOLUTIONS – engineered by eks

eks Engel FOS GmbH & Co. KG | Schützenstraße 2 | 57482 Wenden-Hillmicke, Germany
Tel. +49 2762 9313-600 | Fax +49 2762 9313-7906 | info@eks-engel.de | www.eks-engel.de

