

INTERFACES

M-Bus

RS485

RS232

GSM/GPRS

USB









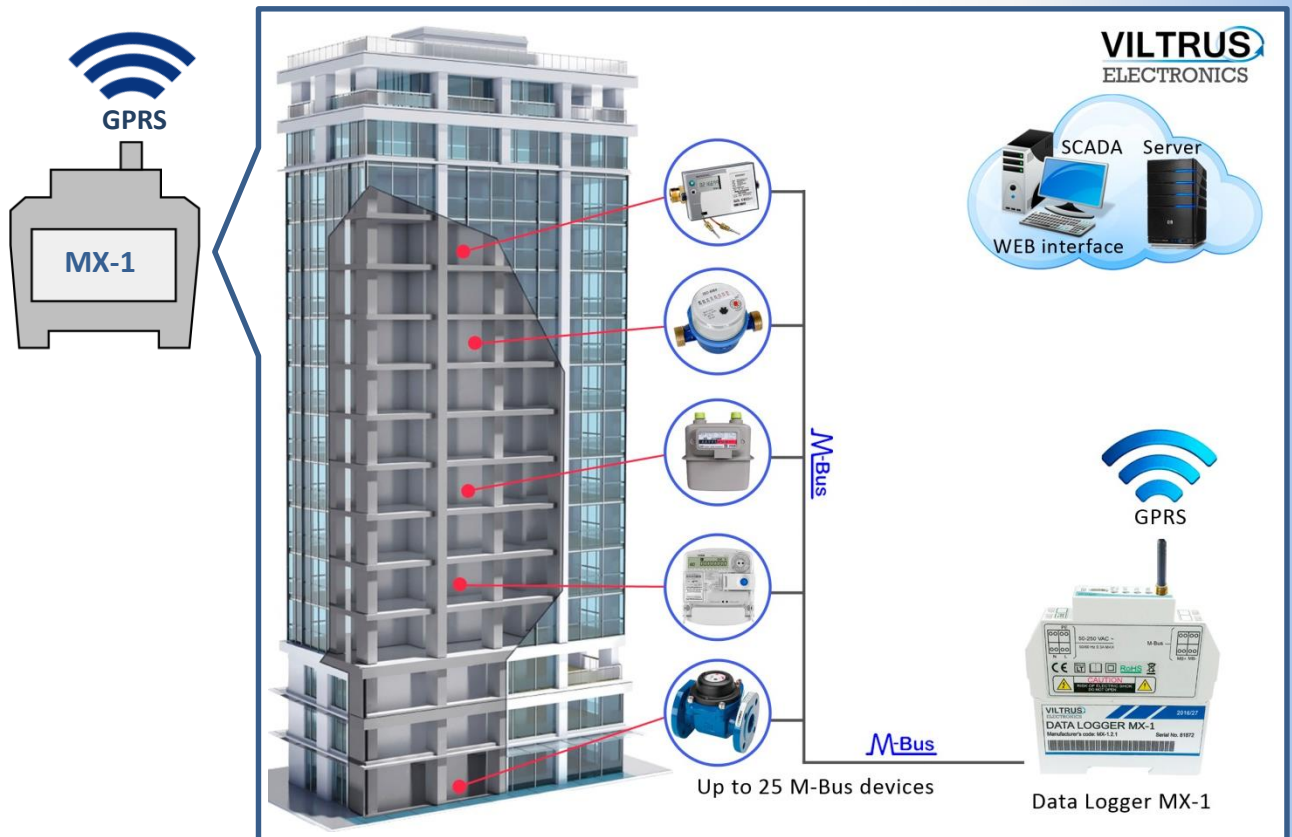
FEATURES

- Reading data from meters (heat, water, gas, electricity...)
- Up to 25 any M-Bus devices connection possibility
- Supported interfaces: M-Bus, RS485, RS232, GSM/GPRS, USB
- Remote communication and updates through GSM/GPRS
- Memory expansion: up to 8 GB using micro SD card
- Galvanically isolated interfaces and power supply
- Power supply: 90-250VAC (50-60Hz), 100-400VDC
- Mounting type: on DIN rail

MX-1 data logger is designed for data reading from meters (electricity, heat, water, gas and others) with M-Bus interface (up to 25 any M-Bus devices) or Modbus interface and storing/exchanging data between device and client's software through GSM/GPRS.

Application

- Industrial monitoring 
- Commercial monitoring 
- Residential monitoring 
- Water/Heat metering 
- Electricity metering 
- Gas metering 



TECHNICAL SPECIFICATIONS

Description		MX-1 data logger	
CPU		ARM Cortex M4	
Flash		archive storage up to 8 MB, data storage without power about 5 years	
External memory		up to 8 GB micro SD card	
Interfaces			
GSM/GPRS		4 band 850/900/1800/1900 MHz	
M-Bus		up to 25 M-Bus devices	
RS232		up to 15 m, speed up to 19,2 Kbits/s	
RS485		up to 1,2 km, max 32 transceivers, speed up to 19,2 Kbits/s	
USB		mini USB type B, ver. 2,0	
Protocols			
Modbus RTU, Modbus TCP/IP, IP, ICMP, UDP, TCP, DHCP, PPP, ARP, SNMP, MQTT			
General			
Power supply AC		90-250V ~ 50/60Hz	
Power supply DC		100-400V	
Over-voltage protection		>1000V	
Power consumption		< 9VA	
Physical characteristics			
Dimensions		18x85x97 mm	
Weight		105 g	
Mounting type		on DIN rail	
Protection type		IP20	
Climate conditions			
Operating temperature		-25 to +60°C	
Storage temperature		-40 to +60°C	
Humidity range		5 – 95%, non-condensing	
LED indication			
Power			
M-Bus interface read/write and short circuit			
GSM/GPRS modem status			
Other features			
Real time clock		+	
Warranty period		2 years	

ORDERING CODE

MX-1.	A.	B.	C
	1 – RS485 2 – RS232 4 – M-Bus	0 – None 1 – Micro SD card slot	0 – None 1 – Internal backup battery

Example: **MX-1.4.1.0** (M-Bus, micro SD card slot)