



EasyLogXL

UNIVERSAL MODBUS DATA LOGGER

Brochure

4neXt S.r.l.s.

Via L. da Vinci, 15/4

30030 - Vigonovo (VE) - ITALY

TEL: +39 049 0981450 EMAIL: info@4next.eu

4neXt is an established group of experts that designs and manufactures products for automation, data collection and management in M2M and IoT applications. Our product lines include: Configurable Data Logger, Programmable RTU, Communication Gateway, Protocol Converters, Bridges and Wireless Sensors.

www.4next.eu



Above All Else... GATHER THE DATA

General Description

EasyLog XL is a data logger that allows interfacing with all **ModBus RTU** and **TCP** devices in a simple way without programming and sends data remotely via the **MQTT** and **HTTP REST protocol**.

The **integrated web server** allows fast and intuitive configuration and display of all variables, programming, data storage and sending to the Cloud. The data sampled by the ModBus MQTT HTTP REST data logger is stored on a **micro SD card**. Each ModBus slave, once configured, can be stored in device libraries for eventual reuse, saving considerable time for subsequent configuration and installation.

EasyLogXL implements the latest data security technologies such as TLS protocol and MQTT certificate management.



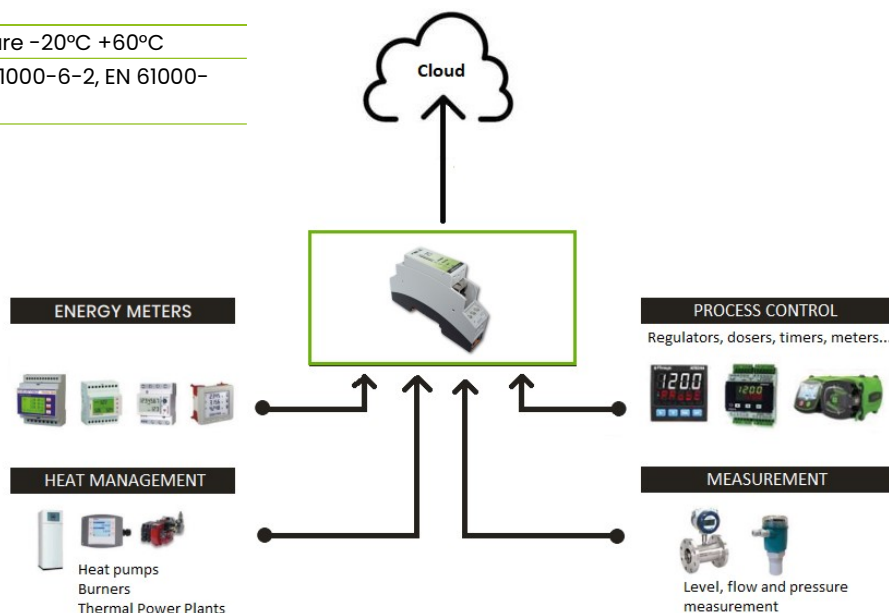
EasyLogXL allows the configuration of each individual variable, the sampling time that can vary from 1 second up to 1 hour. The web server allows you to configure network parameters, data formatting mode (CSV or JSON), time of sending the data remotely and parameters for sending in MQTT. It is also possible to **mirror the variables** in a remote ModBus TCP server. This is an ideal function for duplicating information to a SCADA software or an advanced monitoring system.

Application

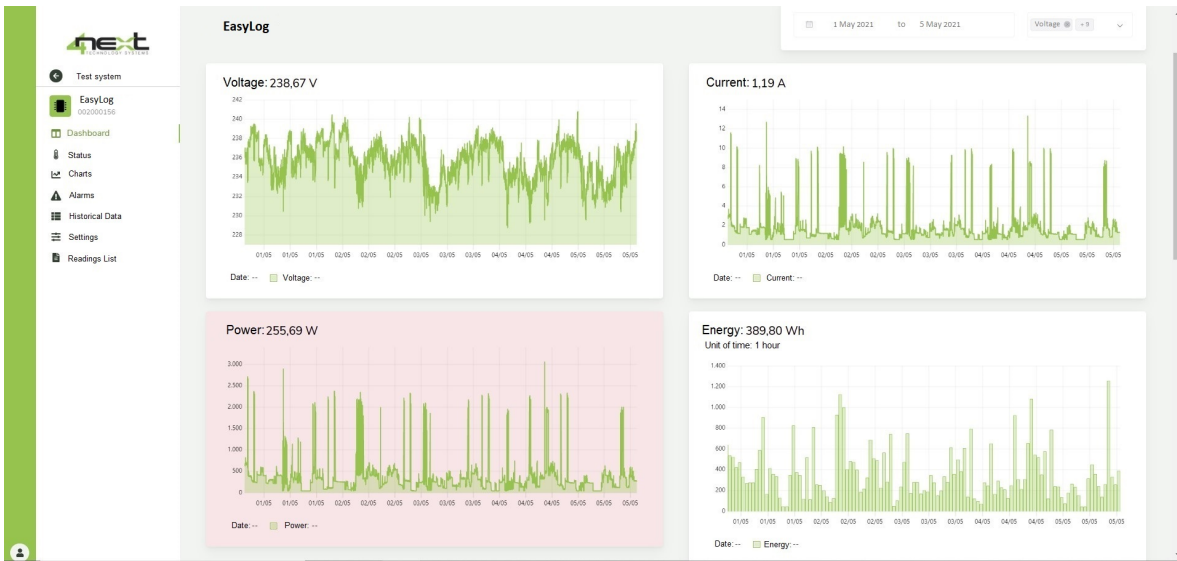
EasyLog is dedicated to real-time recording and data analysis. Using the 4G modem or Ethernet connection, EasyLog sends data to users (e-Mail and FTP) or remote servers for management via a portal. The most widespread applications are: **metering** (Energy, Water, Gas), **water treatment, renewable, industrial** and **process control, thermal power** measurements, **agri-food** monitoring.

Technical Features

GENERAL	ELECTRICAL
10-100Mb/s Ethernet port	Power supply 10-40 v DC / 19-28 v AC
RS485 1200-115200 bps Port	Power consumption <: 1,5W
DIN rail mount (1 module)	N. 1 RS485 serial interface (1200÷115200 bps)
Frontal panel LED signalling	802.11b/g/n integrated module
Size 90 x 60 x 18 mm	
Operating temperature -20°C +60°C	
CE Certification (EN 61000-6-2, EN 61000-6-4 Standards)	



Example of Data Visualization on WEB Portal

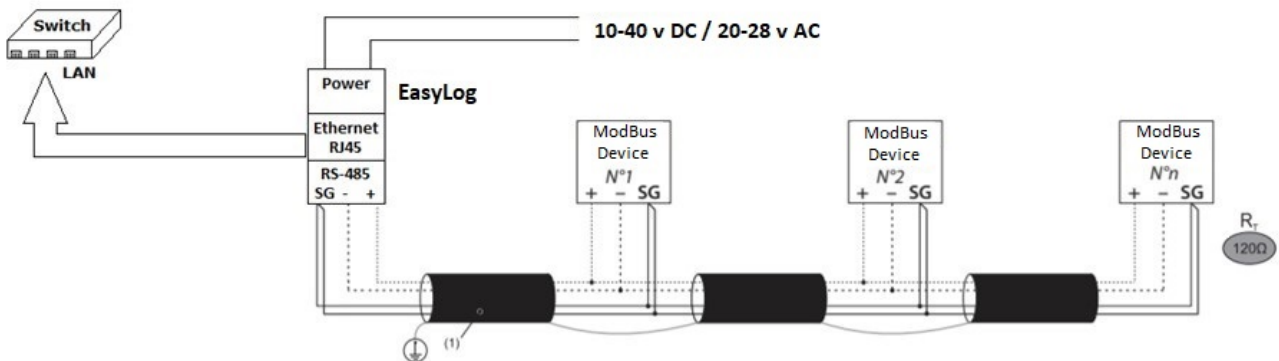


Example of Alarm Page Visualization

The screenshot shows the 'Alarms List' page in the EasyLog web portal. It displays a table of alerts for the user 'Gino Cecchetti'. The table has the following columns: Date, Time, Description, Status, Priority, and Delete. All alerts listed are 'Excess power alarm' with a 'high' priority.

Date	Time	Description	Status	Priority	Delete
10/05/2021	02:53:00	Excess power alarm	Open	high	[X]
10/05/2021	00:49:00	Excess power alarm	Completed	high	[X]
09/05/2021	03:59:00	Excess power alarm	Completed	high	[X]
08/05/2021	16:33:00	Excess power alarm	Completed	high	[X]
08/05/2021	01:06:00	Excess power alarm	Completed	high	[X]
07/05/2021	06:40:00	Excess power alarm	Completed	high	[X]
06/05/2021	19:20:00	Excess power alarm	Completed	high	[X]
06/05/2021	01:06:00	Excess power alarm	Completed	high	[X]
05/05/2021	00:44:00	Excess power alarm	Completed	high	[X]
04/05/2021	15:09:00	Excess power alarm	Completed	high	[X]
04/05/2021	02:37:00	Excess power alarm	Completed	high	[X]

Connection Scheme





www.4next.eu

FOR MORE INFORMATION
CONTACT US

4neXt S.r.l.s.

Via L. da Vinci, 15/4,
30030 - Vigonovo (VE) - ITALY

TEL: +39 049 0981450

MAIL: info@4next.eu
